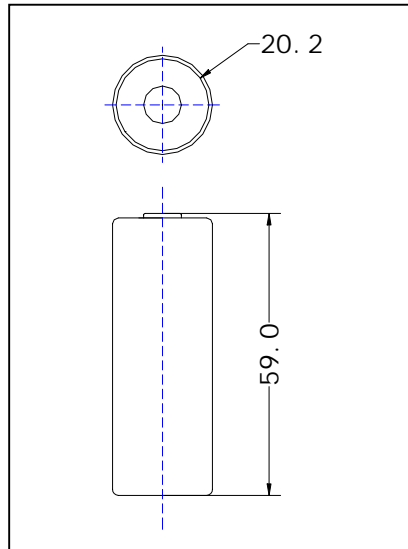


Manganese Dioxide Lithium Battery(Li/MnO₂)

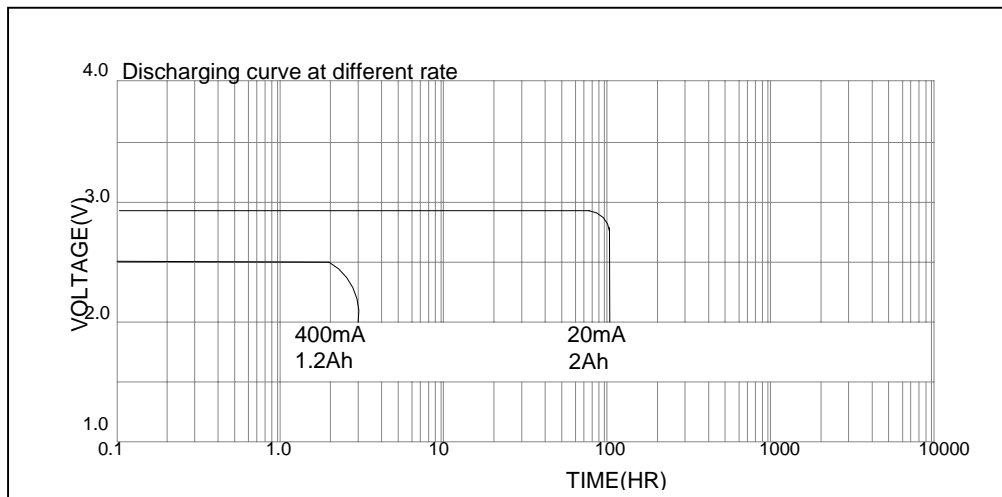
MODEL: CR20590

Nominal capacity (10mA to 2.0V)	2000 mAh
Nominal voltage	3.0 V
Max. Continuous operating current	500 mA
Max. pulse current	1000 mA
Battery weight	42 g
Battery Dimension mm	$\phi 20.0^{\pm 0.2} \times 59.0^{-0.2}$
operating temperature	-40°C ~ +60°C



Notes: All dimensions are in mm.
Tolerance is ± 0.3 mm.

Characteristics



Warning:

- .Do not short-circuit;
- .Do not recharge, force over-discharge, assemble / disassemble and crush; risk of fire and burns;
- .Do not use under temperature above specified range