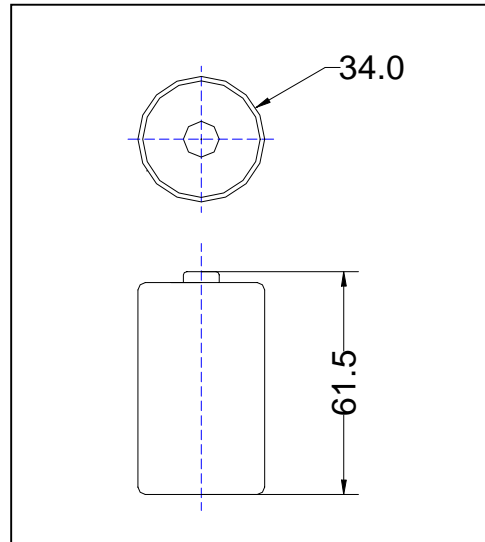


Manganese Dioxide Lithium Battery(Li/MnO₂)

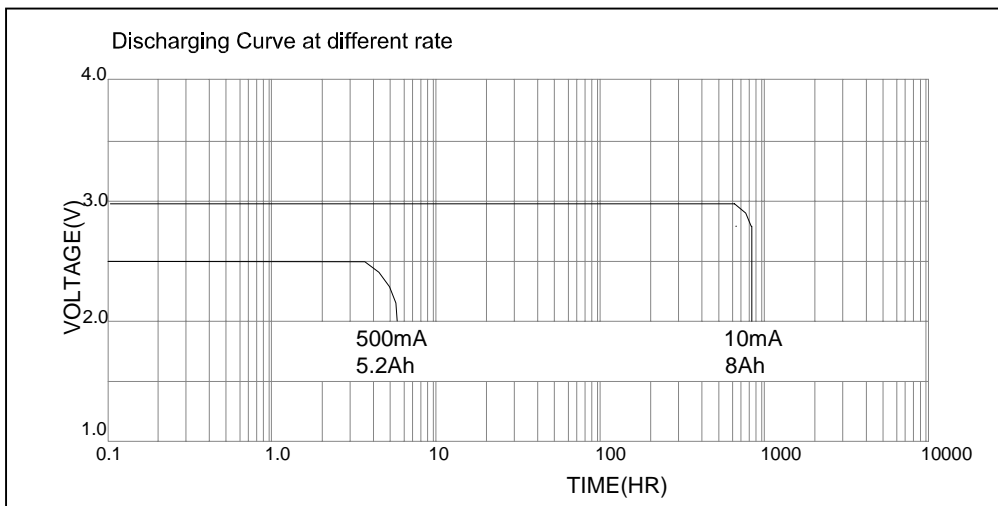
MODEL: CR34615

Nominal capacity (10mA to 2.0V)	8000 mAh
Nominal voltage	3.0 V
Max. Continuous operating current	500 mA
Max. pulse current	2000 mA
Battery weight	110 g
Battery Dimension mm	$\phi 34.0^{\pm 0.2} \times 61.5^{-0.2}$
operating temperature	-40°C~+60°C



Notes: All dimensions are in mm.
Tolerance is ± 0.3 mm.

Characteristics



Warning:

- .Do not short-circuit;
- .Do not recharge, force over-discharge, assemble / disassemble and crush; risk of fire and burns;
- .Do not use under temperature above specified range