



Maintenance-Free Rechargeable Sealed Lead-Acid Battery



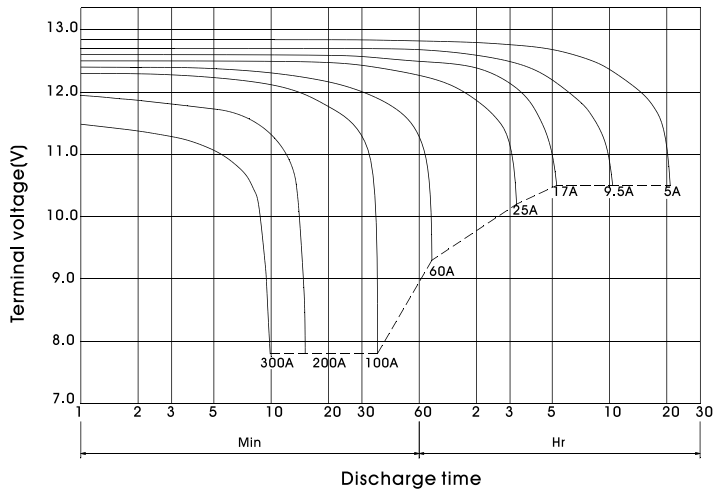
BP100-12

The battery is constructed by plates, separators, safety valves, flame arrestors and container. Since the electrolyte is held by a glass-mat separator and plates, the battery can use in any direction and position without leakage.

PERFORMANCE SPECIFICATIONS

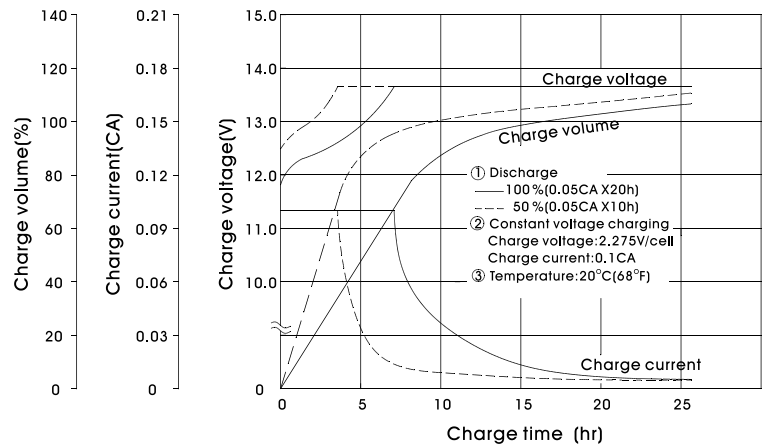
Nominal Voltage(V)	12 volts(6cells in series)
Nominal Capacity(AH)	
20 Hour rate F.V.(1.75V/cell) (5.00A to 10.50volts)	100A.H.
10 Hour rate F.V.(1.75V/cell) (9.50A to 10.50volts)	95A.H.
5 Hour rate F.V.(1.75V/cell) (17.0A to 10.50volts).....	85A.H.
1 Hour rate F.V.(1.55V/cell) (60.0A to 9.30volts).....	60A.H.
Approximate Weight	39.5kg(87.1lbs.)
Terminal	
Standard.....	Type B4
Internal Resistance (Fully Charged Battery)	<4m Ω
Maximum Discharge Current For 5 sec.(A)	1000A
Maximum Charge Current(A)	30A
Ambient Temperature	
Charge.....	0°C(32°F)~40°C(104°F)
Discharge.....	-20°C(-4°F)~50°C(122°F)
Storage.....	-20°C(-4°F)~40°C(104°F)
Case	ABS
Dimension(mm/inch)	
Length ±2mm.....	407/16.02
Width ±2mm.....	173/6.81
Container Height ±2mm.....	210/8.27
Total Height ±2mm.....	239/9.41
Application	UPS,TELCOM,Golf-Carts.

BP100-12 Battery discharge characteristics (25°C/77°F)



BATTERY CHARGING CHARACTERISTICS

(Typical example of the charge characteristics for the standby use)

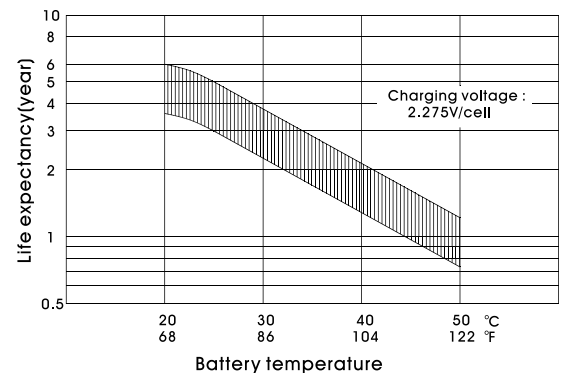


Charging Procedure

Application	Charging method	Charging Voltage at 20°C (V/cell)	Temperature compensation coefficient of charging voltage (mV/°C/cell)	Max. charging current (CA)	Charging time 0.1CA, 20°C (h)		Temp (°C)
					100% discharge	50% discharge	
For standby power Source	Constant voltage & Constant current charging (with current restriction)	2.25~2.30	-3	0.3	24	20	0~40 (32~104°F)
For cycle service		2.40~2.50	-4	0.3	16	10	

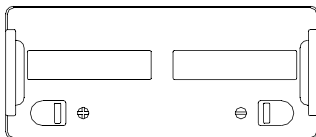
*Temperature compensation of charging voltage is not needed, when using the batteries within 5°C to 35°C range.

Effect of Temperature on Long Term Float Life



OUTER DIMENSIONS

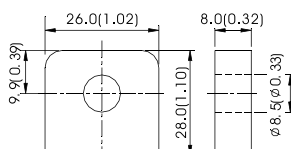
mm(inch)



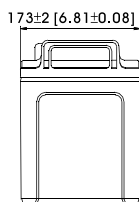
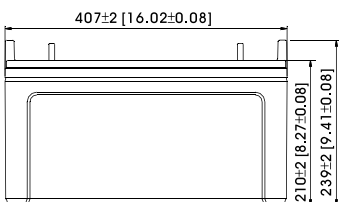
TERMINAL TYPE

mm(inch)

●Terminal B4



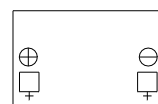
(M8 BOLT & NUT)



Constant power discharge characteristics at 25°C/77°F

Final Voltage	Discharge time									
	5Min	10Min	15Min	30Min	1Hr	3Hr	5Hr	10Hr	20Hr	
10.80V	3615.7	2661.4	2132.9	1268.6	727.86	291.43	201.00	112.29	58.71	
10.50V	4184.3	2882.9	2231.4	1317.1	749.57	297.29	204.00	114.00	60.00	
10.20V	4445.7	2987.1	2300.0	1347.1	763.14	300.00	205.14	114.57	60.29	
9.90V	4645.7	3058.6	2352.9	1365.7	772.29	302.14	205.86	114.86	60.43	
9.60V	4800.0	3120.0	2400.0	1380.0	780.00	303.86	206.43	114.86	60.43	

TERMINAL POSITION



B.B. BATTERY CO., LTD. Web Site: <http://www.bb-battery.com>

USA :

B&B BATTERY (USA) INC.
6415 RANDOLPH ST. COMMERCE,
CA, 90040 U.S.A.
TEL: 1-323-278-1900 . 1-800-278-8599
FAX: 1-323-278-1268

UK:

B & B BATTERY (UK) CO., LTD.
TEL: 44-161-343-7430
FAX: 44-161-343-7030

JAPAN:

B & B BATTERY (JAPAN) CO., LTD.
TEL: 81-426-256-537
FAX: 81-426-256-537

CHINA FACTORY:

CHENG DONG TRIAL AREA, HUANG GANG,
RAOPING GUANG DONG, CHINA, 515700
TEL: 86-768-7601001-2
FAX: 86-768-7601469

HONG KONG OFFICE:

NATIONAL TRADING LTD.
TEL: 852-2301-3800
FAX: 852-2739-1182

TAIWAN OFFICE:

B & B BATTERY CO., LTD.
TEL: 886-6-2607335
FAX: 886-6-2602402



MH19884

