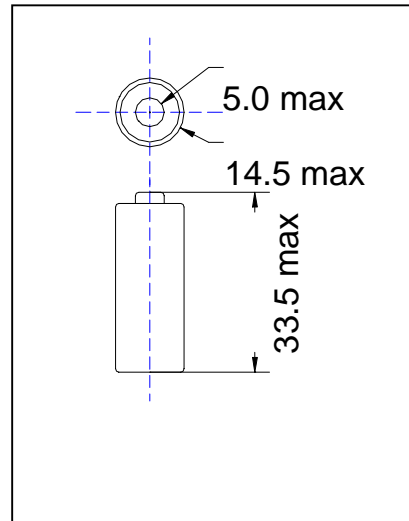


Thionyl Chloride Lithium Battery(Li/SOCl₂)

MODEL: ER14335M

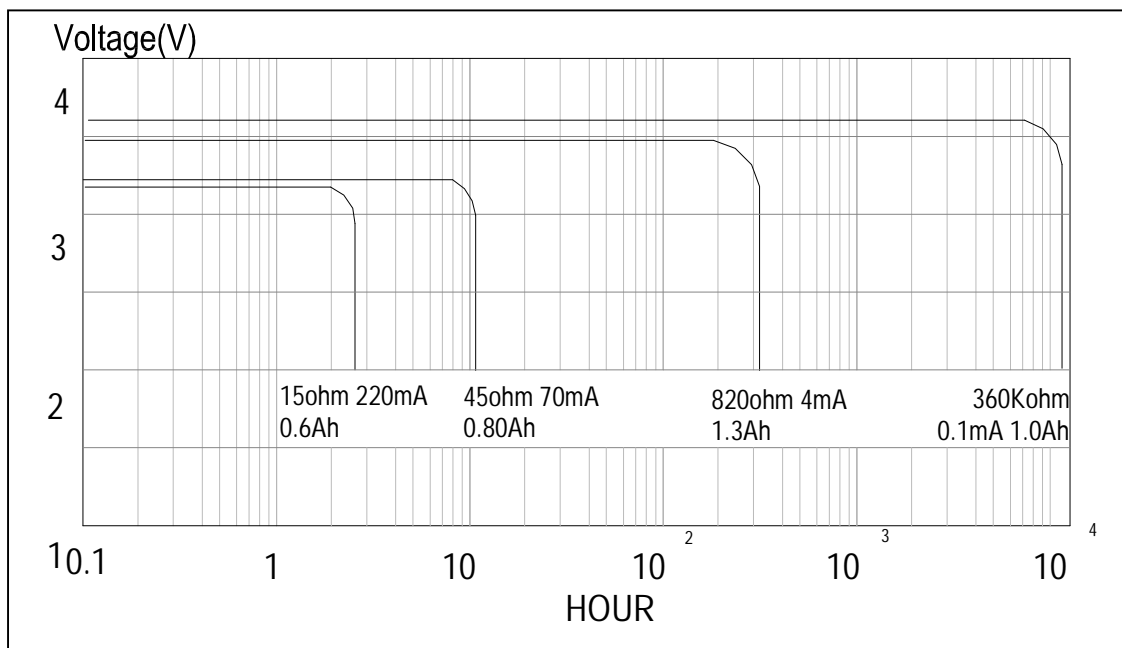
Nominal capacity (4mA to 2.0V)	1300 mAh
Nominal voltage	3.6 V
Max. Continuous operating current	200 mA
Max. Pulse current	500 mA
Battery weight	12 g
Battery dimension	φ 14.5×33.5 mm
operating temperature	-55°C~+75°C



Notes: All dimensions are in mm.
Tolerance is ±0.3mm.

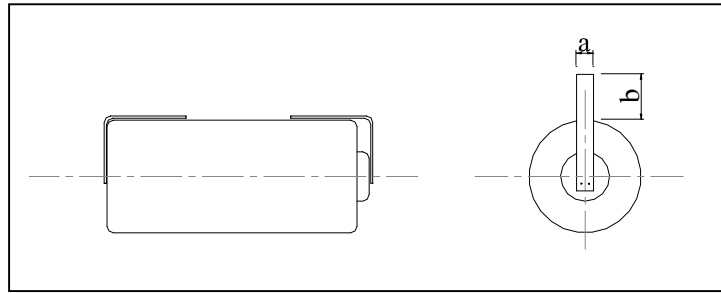
Characteristics:

Capacity vs. Different discharging rate

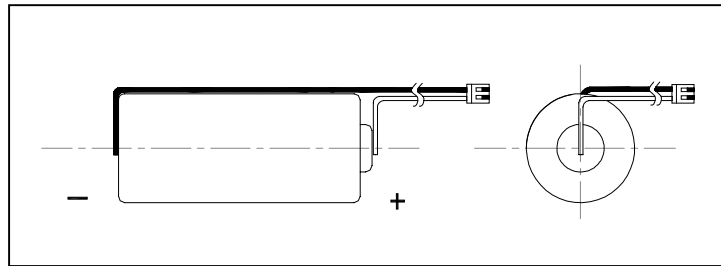


Figures of leading tags:

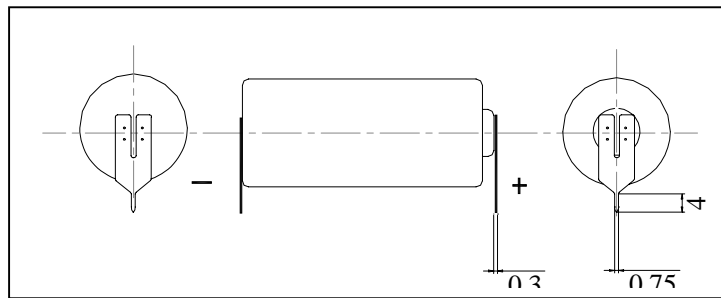
a. Nickel strip



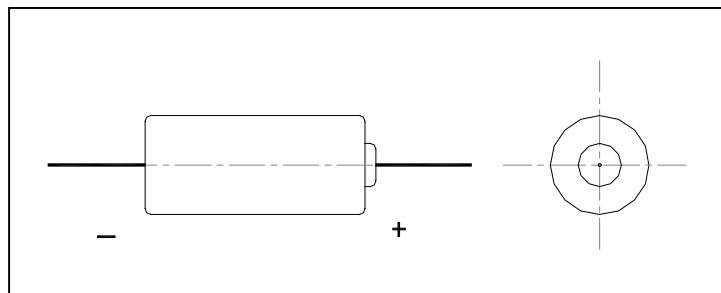
b. Plug



c. Pins



d. axial tag



Warning:

- .Do not short-circuit;
- .Do not recharge, force over-discharge, assemble / disassemble and crush; risk of fire and burns;
- .Do not use under temperature above specified range